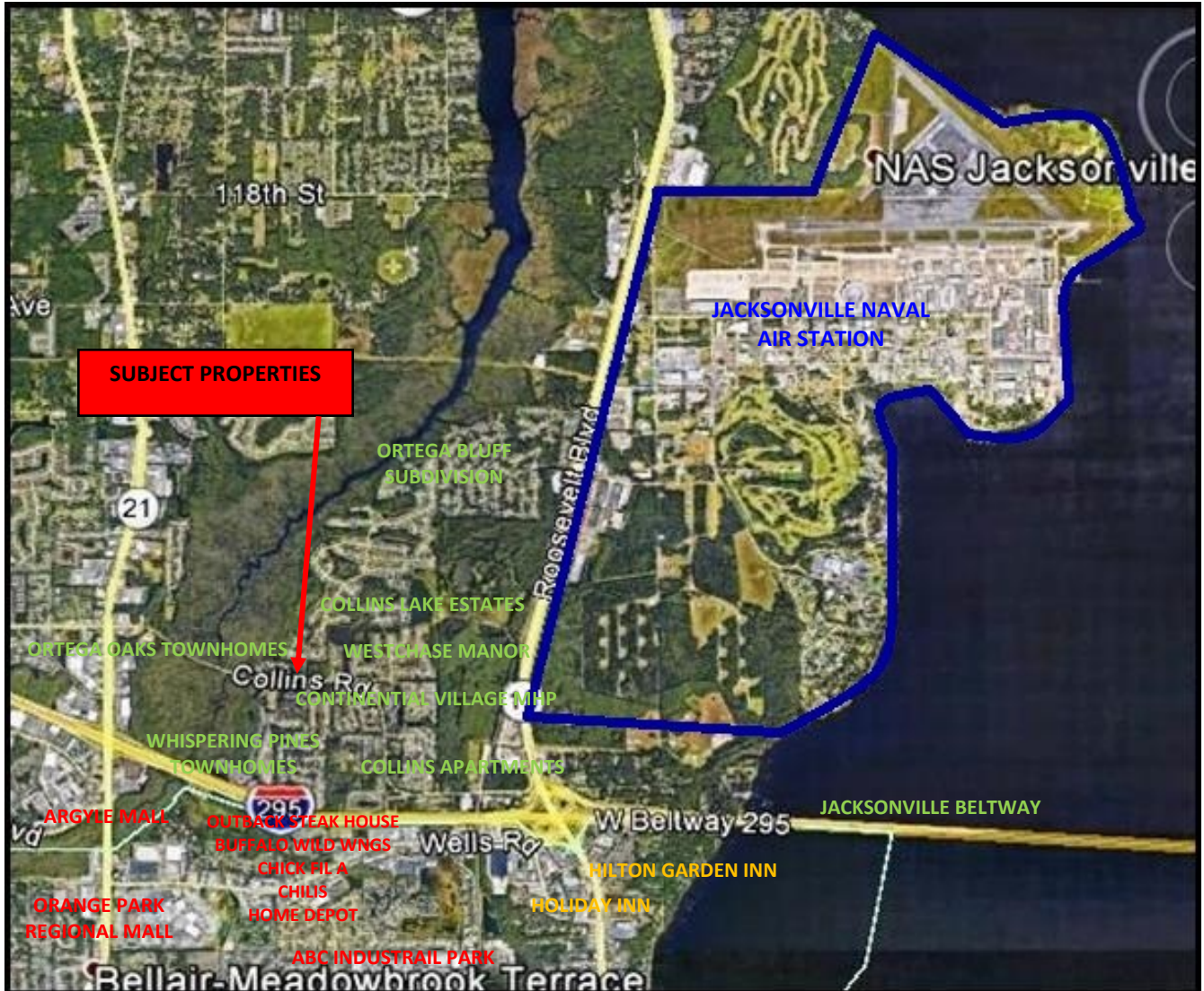


# PRICE DRASTICALLY REDUCED!

## OFFICE/RETAIL LAND

### JACKSONVILLE, FL

TWO PARCELS AT THE CORNER OF COLLINS RD AND ORTEGA BLUFF PARKWAY  
OUT OF STATE OWNER READY TO SELL!



#### SILVERFIELD CRANFORD COMMERCIAL REALTY, INC.

Jimmy Cranford

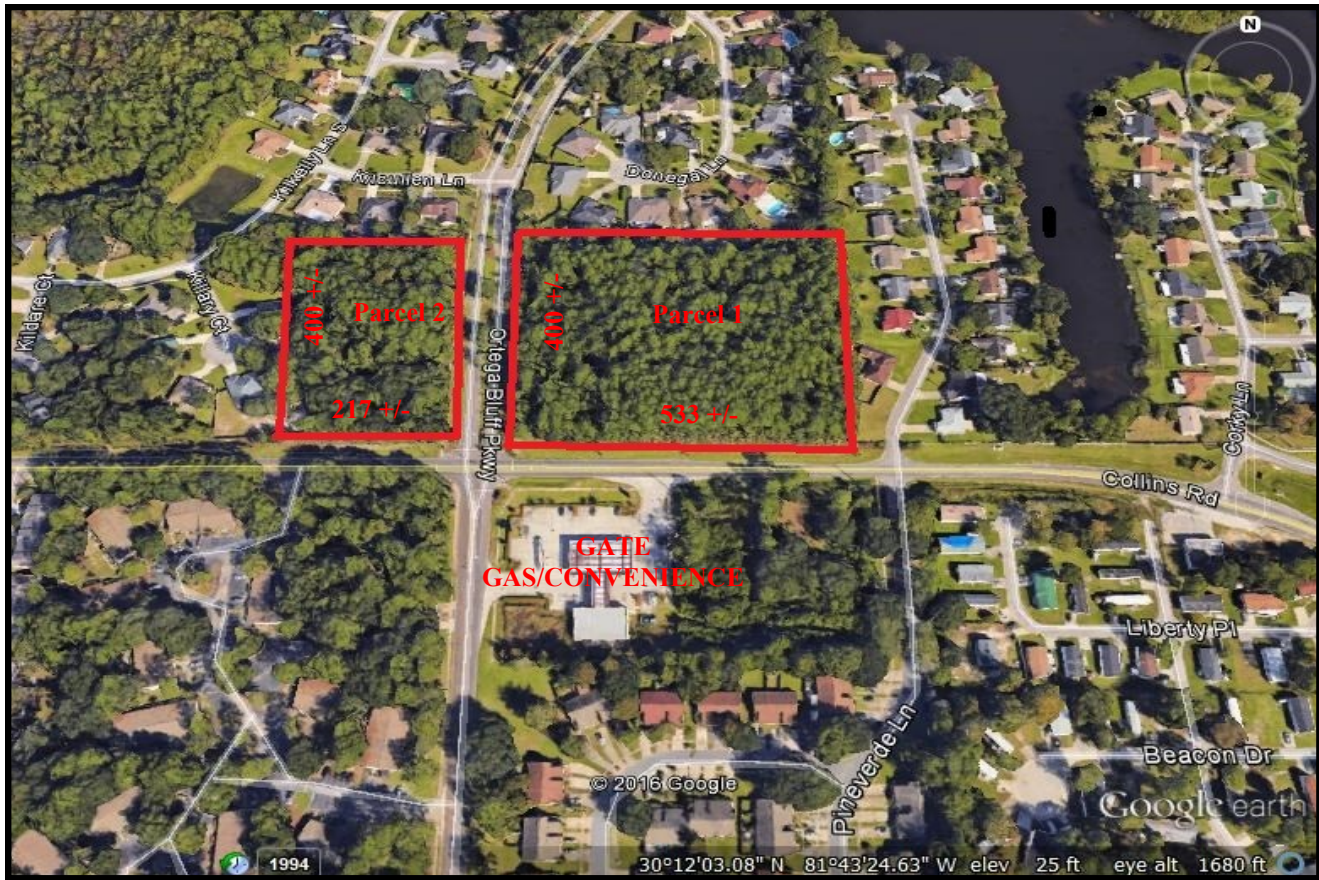
10175 FORTUNE PARKWAY, SUITE 1005, JACKSONVILLE, FL 32256

(904) 519-9545 / FAX (904) 519-9546 \* [www.silverfieldgroup.com](http://www.silverfieldgroup.com) \* [silverfieldgroup@bellsouth.net](mailto:silverfieldgroup@bellsouth.net)

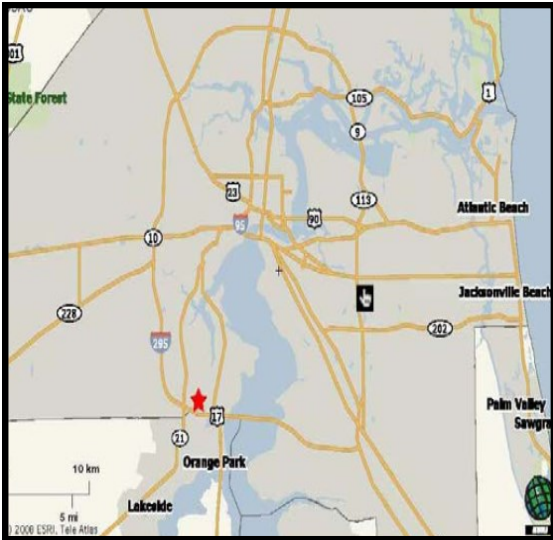
LICENSED REAL ESTATE BROKER

Note of Disclaimer: Details contained herein are believed to be correct; however, they are subject to errors, omissions,





Parcel 1:	Size: 5.03 Acres Price: <del>\$750,000</del> -\$400,000
Parcel 2:	Size: 1.97 Acres Price: <del>\$275,000</del> -\$175,000
Zoning:	Commercial Office
Land Use:	Commercial Neighborhood
Utilities:	Water & Sewer along Collins Rd.
Population:	1 Mile 8,200 3 Mile 54,000



**SILVERFIELD CRANFORD COMMERCIAL REALTY, INC.**

Jimmy Cranford

10175 FORTUNE PARKWAY, SUITE 1005, JACKSONVILLE, FL 32256

(904) 519-9545 / FAX (904) 519-9546 \* [www.silverfieldgroup.com](http://www.silverfieldgroup.com) \* [silverfieldgroup@bellsouth.net](mailto:silverfieldgroup@bellsouth.net)

LICENSED REAL ESTATE BROKER

Note of Disclaimer: Details contained herein are believed to be correct; however, they are subject to errors, omissions,