

NEW COMMERCIAL SITE FOR SALE ALL OR PART CORNER OF NEW WORLD AVENUE (UNDER CONSTRUCTION) AND CHAFFEE ROAD



7.4 +/- ACRES
GROWING CECIL COMMERCE CENTER AREA

SILVERFIELD CRANFORD COMMERCIAL REALTY, INC.

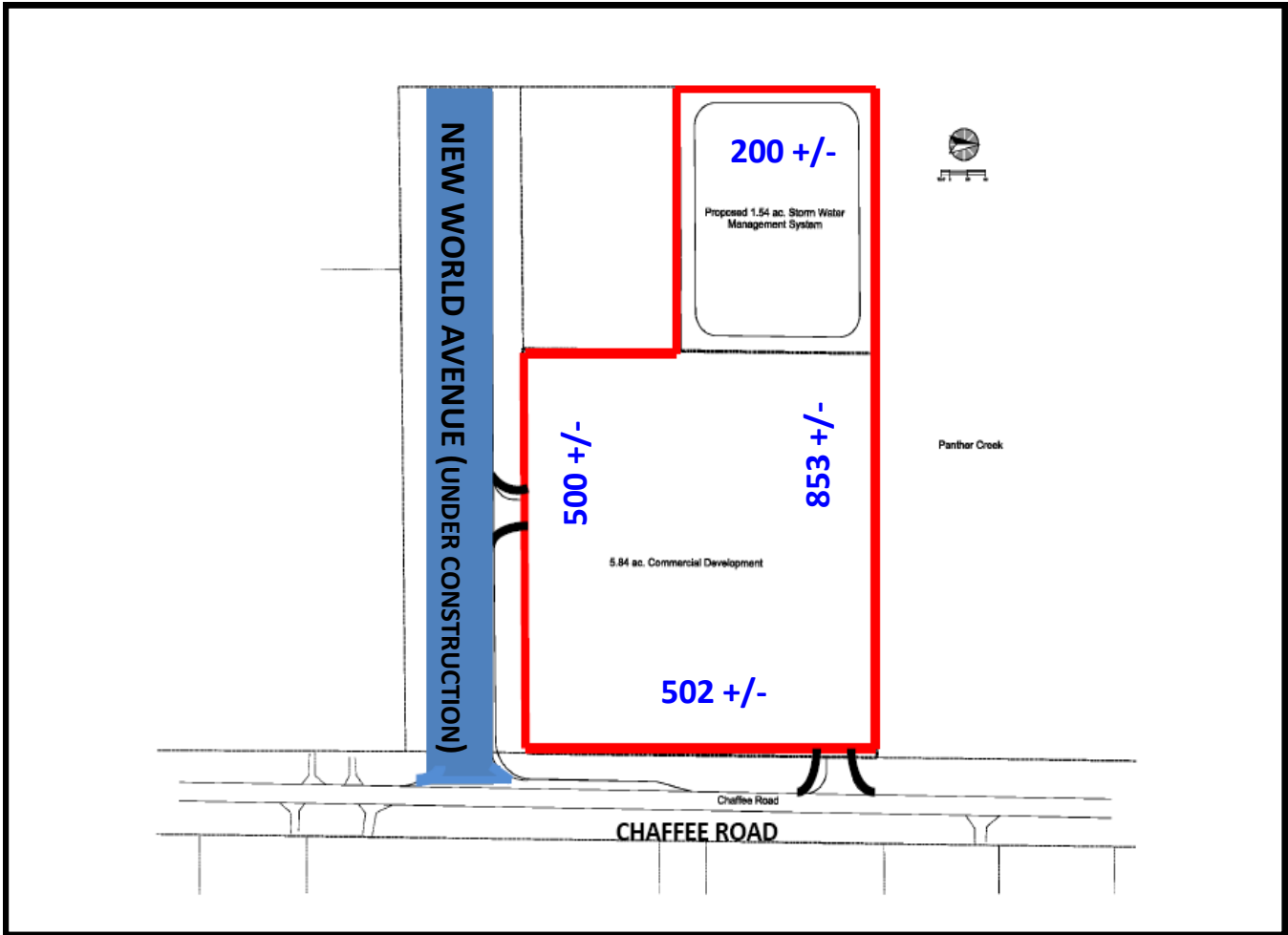
Jimmy Cranford

10175 FORTUNE PARKWAY, SUITE 1005, JACKSONVILLE, FL 32256

(904) 519-9545 / FAX (904) 519-9546 * www.silverfieldgroup.com * silverfieldgroup@bellsouth.net

LICENSED REAL ESTATE BROKER

Note of Disclaimer: Details contained herein are believed to be correct; however, they are subject to errors, omissions, price change or withdrawal without notice.



SIZE OF PARCEL: 7.4 ACRES +/-

PRICE: \$2,900,000 FOR ENTIRE TRACT, DIVISIBLE

ZONING: COMMERCIAL PUD ALLOWS MOST RETAIL AND COMMERCIAL USES

UTILITES: CITY WATER AND SEWER

SITE HAS MOBILITY FEE CONCESSIONS

SILVERFIELD CRANFORD COMMERCIAL REALTY, INC.

Jimmy Cranford

10175 FORTUNE PARKWAY, SUITE 1005, JACKSONVILLE, FL 32256

(904) 519-9545 / FAX (904) 519-9546 * www.silverfieldgroup.com * silverfieldgroup@bellsouth.net

LICENSED REAL ESTATE BROKER

Note of Disclaimer: Details contained herein are believed to be correct; however, they are subject to errors, omissions, price change or withdrawal without notice.