

OUTPARCEL FOR SALE CR 210 WEST ST. JOHNS COUNTY, FL

**Silverfield Cranford
Commercial Realty, Inc.,
Licensed Real Estate Broker**

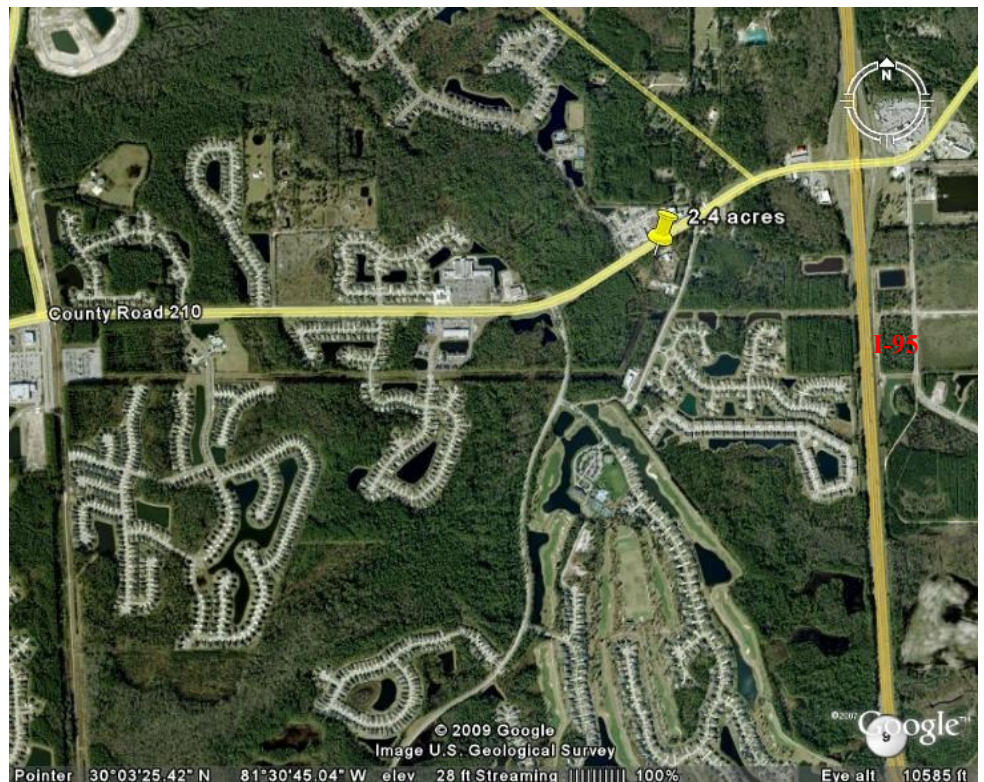
www.silverfieldgroup.com

**ONE OF THE LAST
OUTPARCELS
FRONTING ON
CR210 WEST**

10175 Fortune Parkway
Suite 1005
Jacksonville, FL 32256

Phone: 904-519-9545
Cell: 904-993-6367

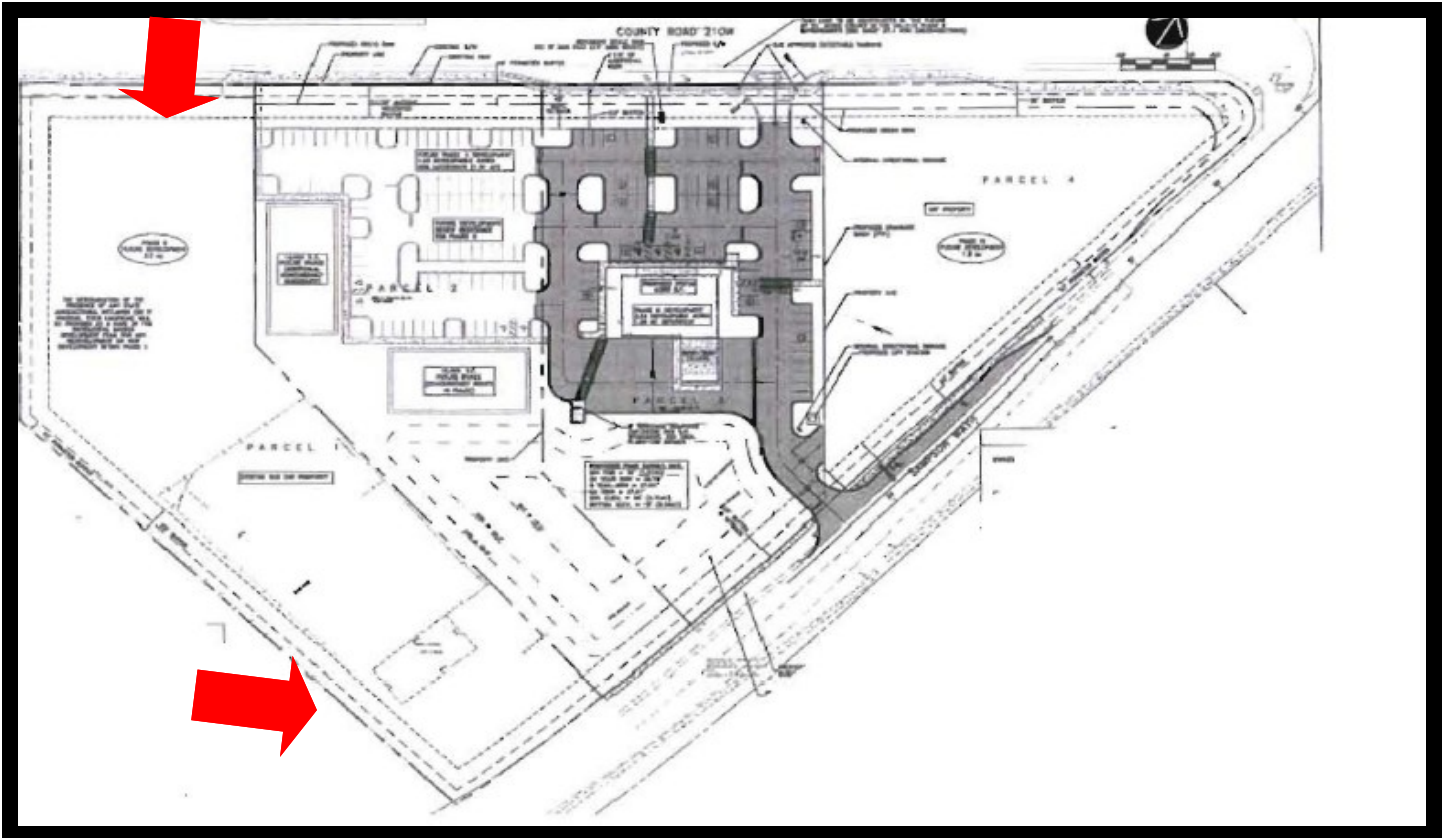
Email: bethbrdng@gmail.com



Up to 3.2 acres of commercial outparcels with development rights for sale with frontage on CR 210 West . Traffic count is 40,000+ cars per day. Access is available at a full median cut on CR 210 W and also from Old Leo Maguire Road. Less than 1/2 mile west of I-95 in the highly desired and sought after 210 corridor. Allowable uses include but are not limited to retail, restaurants with or without drive-thru, private schools, daycare, auto uses, medical and office.

3 MILE RADIUS 5,800+ ROOFTOPS W/ 1,200 NEW LOTS

Asking Price \$1,700,000



SILVERFIELD CRANFORD COMMERCIAL REALTY, INC.
 904-519-9545 off 904-993-6367 cell
 Beth Breeding
 bethbrdng@gmail.com
 www.silverfieldgroup.com